



VIEWPOINT LOCATION MAP



PROPOSED CONDITIONS



TECHNICAL INFORMATION

Viewpoint Coordinates in NY State Plane West	1035365.1 E 969492.3 N
Viewpoint Location	Delamater Rd
Viewer Elevation (ft msl)	672.6
Distance to Project	263 ft
Camera Model	Canon 5D Full Frame
Lens Setting	50 mm
Date/Time	2.24.2017/9:02 am

Gardenville-Dunkirk 141/141 Northern Section Rebuild Project North Angola Substation to Structure 4
 Figure 4.4-4
 Visual Simulations of Project
 Sheet 2 of 15



View west. Closest structure to viewer is #233

VIEWPOINT LOCATION MAP



EXISTING CONDITIONS



TECHNICAL INFORMATION

<i>Viewpoint Coordinates in NY State Plane West</i>	1035365.1 E 969492.3 N
<i>Viewpoint Location</i>	Delamater Rd
<i>Viewer Elevation (ft msl)</i>	672.6
<i>Distance to Project</i>	263 ft
<i>Camera Model</i>	Canon 5D Full Frame
<i>Lens Setting</i>	50 mm
<i>Date/Time</i>	2.24.2017/9:02 am

Gardenville-Dunkirk 141/141 Northern Section Rebuild Project North Angola Substation to Structure 4
 Figure 4.4-4
 Visual Simulations of Project
 Sheet 3 of 15



VIEWPOINT LOCATION MAP



PROPOSED CONDITIONS



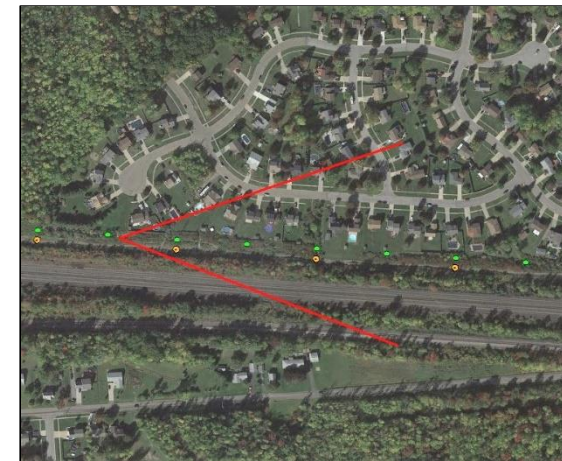
TECHNICAL INFORMATION

<i>Viewpoint Coordinates in NY State Plane West</i>	1055843.2 E 991834.9 N
<i>Viewpoint Location</i>	Margaret Ann Drive
<i>Viewer Elevation (ft msl)</i>	708.7
<i>Distance to Project</i>	ON ROW
<i>Camera Model</i>	Canon 5D Full Frame
<i>Lens Setting</i>	50 mm
<i>Date/Time</i>	10.10.2017/2:21 pm
Gardenville-Dunkirk 141/141 Northern Section Rebuild Project North Angola Substation to Structure 4 Figure 4.4-4 Visual Simulations of Project Sheet 4 of 15	



View east. Closest structure to viewer is #161

VIEWPOINT LOCATION MAP



EXISTING CONDITIONS



TECHNICAL INFORMATION

<i>Viewpoint Coordinates in NY State Plane West</i>	1055843.2 E 991834.9 N
<i>Viewpoint Location</i>	Margaret Ann Drive
<i>Viewer Elevation (ft msl)</i>	708.7
<i>Distance to Project</i>	ON ROW
<i>Camera Model</i>	Canon 5D Full Frame
<i>Lens Setting</i>	50 mm
<i>Date/Time</i>	10.10.2017/2:21 pm
Gardenville-Dunkirk 141/141 Northern Section Rebuild Project North Angola Substation to Structure 4 Figure 4.4-4 Visual Simulations of Project Sheet 5 of 15	



VIEWPOINT LOCATION MAP



PROPOSED CONDITIONS



TECHNICAL INFORMATION

<i>Viewpoint Coordinates in NY State Plane West</i>	1055879.6 E 992255.6 N
<i>Viewpoint Location</i>	Marina Drive
<i>Viewer Elevation (ft msl)</i>	690.9
<i>Distance to Project</i>	476 Ft
<i>Camera Model</i>	Canon 5D Full Frame
<i>Lens Setting</i>	50 mm
<i>Date/Time</i>	4.26.2017/11:46 am

**Gardenville-Dunkirk 141/141
Northern Section Rebuild Project
North Angola Substation to Structure 4**
Figure 4.4-4
Visual Simulations of Project
Sheet 6 of 15



View southerly. Rightmost structure in view is #160

VIEWPOINT LOCATION MAP



EXISTING CONDITIONS



TECHNICAL INFORMATION

<i>Viewpoint Coordinates in NY State Plane West</i>	1055879.6 E 992255.6 N
<i>Viewpoint Location</i>	Marina Drive
<i>Viewer Elevation (ft msl)</i>	690.9
<i>Distance to Project</i>	476 ft
<i>Camera Model</i>	Canon 5D Full Frame
<i>Lens Setting</i>	50 mm
<i>Date/Time</i>	4.26.2017/11:46 am

**Gardenville-Dunkirk 141/141
Northern Section Rebuild Project
North Angola Substation to Structure 4**
Figure 4.4-4
Visual Simulations of Project
Sheet 7 of 15